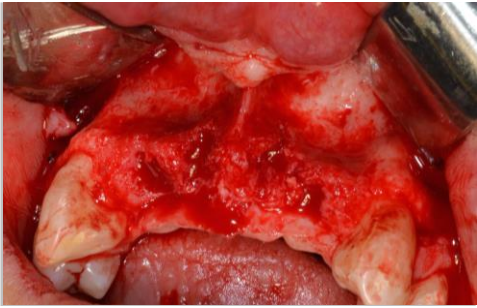


Tisseos<sup>®</sup>  
Resorbable synthetic membrane

## Case studies

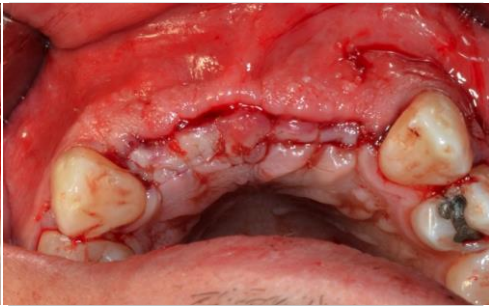
**Clinical case study**  
**Drs. BRAY Estelle and L'ENFANT Benoit,**  
**Nantes, France**



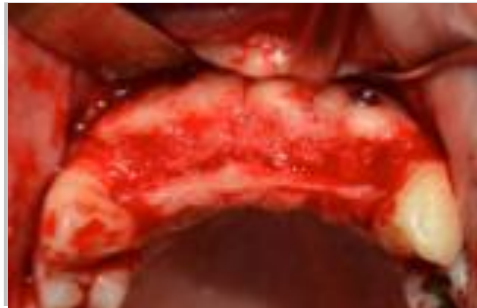
Initial clinical situation



Allogenic bone graft



Alveolar ridge after 4 months



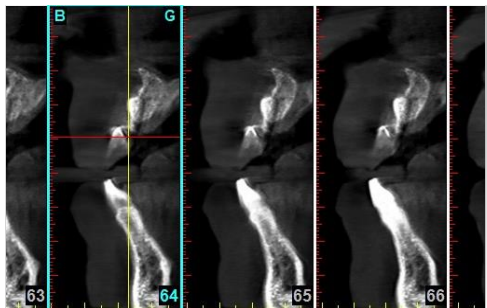
Insertion of 2 implants



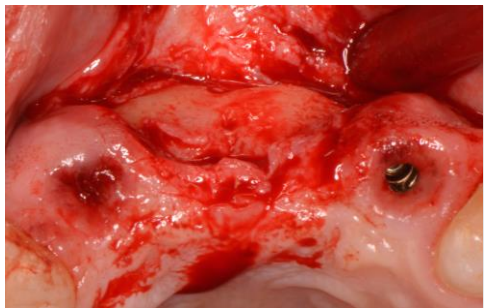
Prosthetics rehabilitation showing the vertical defect

# Alveolar ridge regeneration following allogenic bone grafting

using Tisseos® membrane and a biomaterial



CT-scans

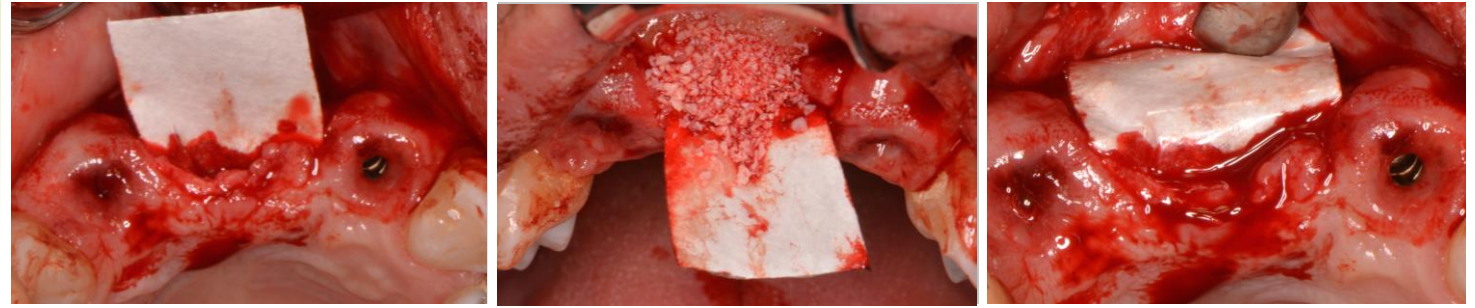


Resorption of the allogenic bone graft

# Predictable vertical bone regeneration

Resorption of allogenic bone graft is difficult to predict.

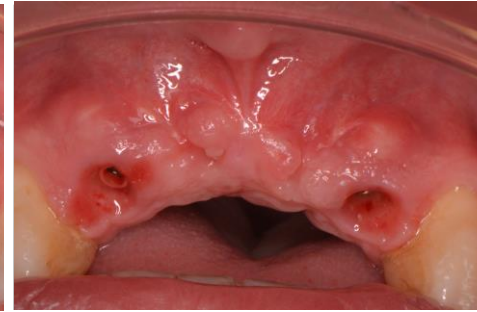
Guided bone regeneration using Tisseos® and biomaterial allows you to augment bone vertically in a more predictable way.



Placement of Tisseos® membrane and filling of the defect with a biomaterial



Healing at 8 days



Healing at 2 ½ months



Temporary prosthetics restoration



IRS UN, 8 quai Moncouso, 44000 Nantes, France  
Phone : + 33 228 08 00 37 - Fax : + 33 228 08 00 39  
contact@biometiss.com  
[www.biomedical-tissues.com](http://www.biomedical-tissues.com)