

Tisseos<sup>®</sup>  
Resorbable synthetic membrane

## Case studies

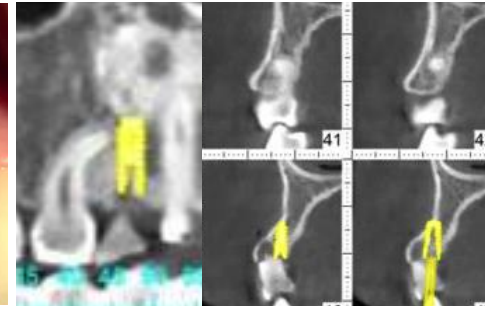
**Cilinal case study**  
**Dr. HOORNAERT Alain**  
**Nantes, France**

# Bone augmentation with immediate implantation

using Tisseos® membrane and a biomaterial



Initial clinical situation



Preoperative cone beam scans



Alveolar ridge



Insertion of implant



Filling with biomaterial in the fenestration



Covering with Tisseos® membrane



Post-surgical view



Healing at 1 month

## Key features of Tisseos®

- The insertion of a dental implant for a screw-retained prosthetic may lead to a vestibular dehiscence when the maxillary bone profile is not favorable.
- The use of Tisseos® and a biomaterial at the apex of the implant allows you to prevent such dehiscence.
- The ease of handling of Tisseos® saves time in such types of surgery.



X-ray



Final restoration



IRS UN, 8 quai Moncoustu, 44000 Nantes, France  
Phone : + 33 228 08 00 37 - Fax : + 33 228 08 00 39  
contact@biometiss.com  
[www.biomedical-tissues.com](http://www.biomedical-tissues.com)