

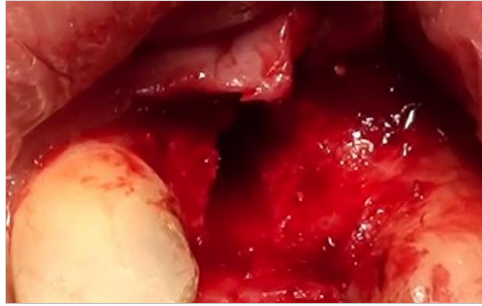
Tisseos[®]
Resorbable synthetic membrane

Case studies

Clinical case study
Dr. EVANNO Charles,
Liré, France



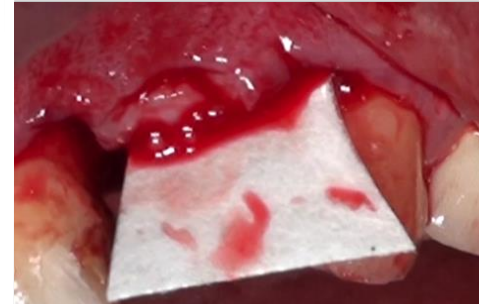
Initial clinical situation



Alveolar ridge after opening of the gingiva



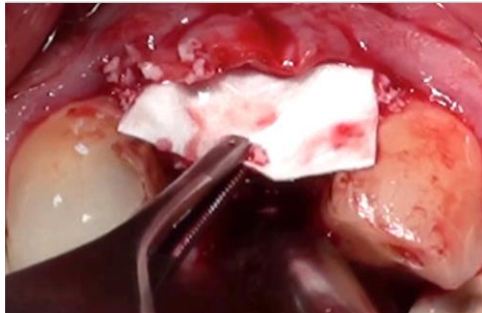
Implant with exposed turns



Placement of Tisseos® membrane



Filling with the biomaterial



Repositioning of the membrane



Palatal insertion



Sutures



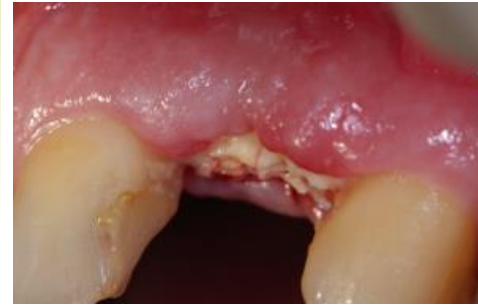
X-ray

Dehiscence coverage

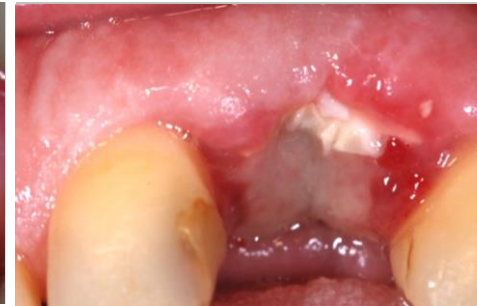
using Tisseos® membrane and a biomaterial

What to do in case of membrane exposure?

- When filling a large defect, it may be difficult to close the gingival tissue without tension. The membrane may then become exposed during the gingival healing.
- If exposed, Tisseos® membrane maintains its physical integrity, prevents leakage of the biomaterial and prevents infection of the site.
- The healing of the gingiva is favoured by the guided tissue regeneration properties of the Tisseos® membrane.
- After exposure, the gingival tissue will heal and close in 2 weeks without losing the barrier effect.
- Mouth wash with antiseptic solution and local application of a Chlorhexidine gel are recommended in case of membrane exposure.



Membrane exposure at day 8



Gingival healing at day 16



Placement of the cover screw
at 1 month



Prosthetics restoration



IRS UN, 8 quai Moncoussu, 44000 Nantes, France
Phone : + 33 228 08 00 37 - Fax : + 33 228 08 00 39
contact@biometiss.com
www.biomedical-tissues.com