

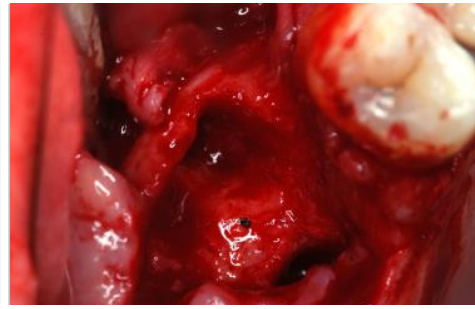
Tisseos<sup>®</sup>  
Resorbable synthetic membrane

## Case studies

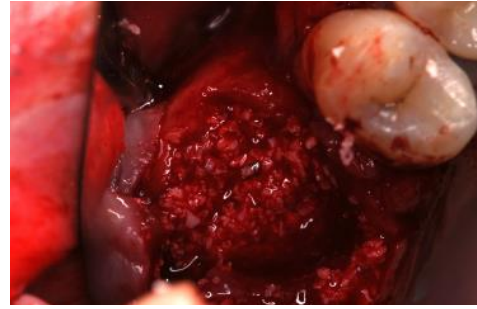
**Clinical case study**  
**Dr. MORLOCK Jean-François**  
**Tours, France**



Clinical situation before tooth extraction



Dental alveole and bone ridge



Filling with biomaterial

**Socket preservation**  
using Tisseos® membrane  
and a biomaterial



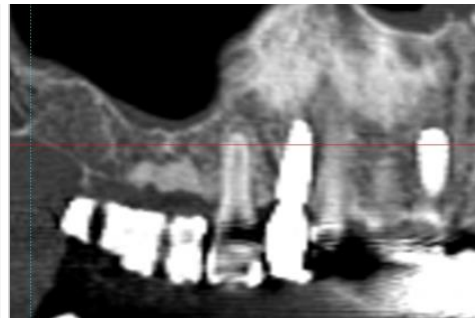
Covering with Tisseos®  
membrane



Healing at 5 days



Healing at 28 days



X-ray at 6 months

# Socket preservation

- After tooth extraction, the alveolar bone resorbs, compromising the insertion of implants.
- Filling of the alveole with biomaterial limits the bone resorption.
- Tisseos® membrane covers the biomaterial until bone healing is complete.



Re-entry at 6 months



Insertion of 2 implants



Final restoration





IRS UN, 8 quai Moncoussu, 44000 Nantes, France  
Phone : + 33 228 08 00 37 - Fax : + 33 228 08 00 39  
contact@biometiss.com  
[www.biomedical-tissues.com](http://www.biomedical-tissues.com)