

Tisseos[®]
Resorbable synthetic membrane

Case studies

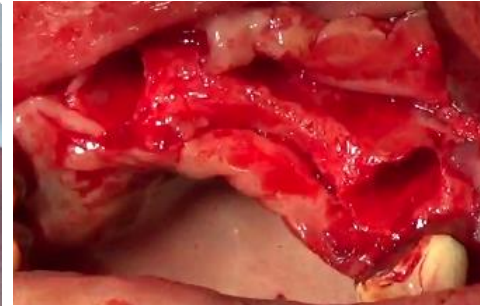
Clinical case study
Dr. HOORNAERT Alain
Nantes, France

Socket preservation and bone ridge augmentation

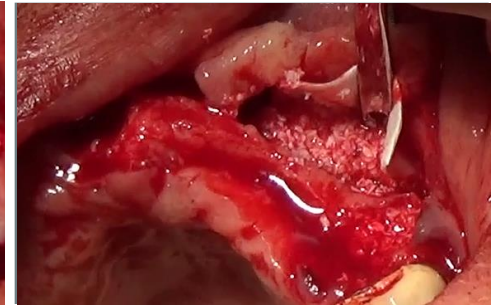
using Tisseos® membrane and a biomaterial



Initial clinical situation



Bone crest after opening of the gingiva



Filling of the defect with biomaterial



Positioning of Tisseos® membrane



Postoperative view



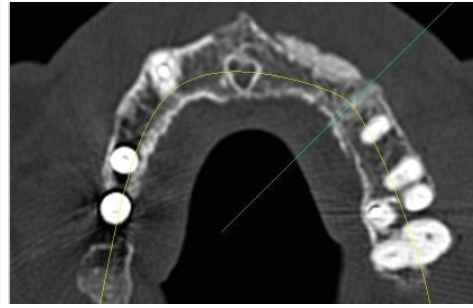
Gingiva healing at 8 days



Clinical situation after 4 months showing vertical and horizontal bone augmentation



Why correct vestibular bone defects?



CT-scan before surgery
(prior to implantation)



Insertion of 3 implants



Alveolar bone resorption after tooth extraction cannot be avoided. In the anterior maxillary bone, resorption is observed on the vestibular side and can negatively impact the placement of the implant in two ways:

- The axis of the dental implant may be misplaced
- The implant may be visible when smiling

Using a dental membrane allows you to overcome such problems.



Placement of covering screws



Temporary prosthetics
restoration



IRS UN, 8 quai Moncoussu, 44000 Nantes, France
Phone : + 33 228 08 00 37 - Fax : + 33 228 08 00 39
contact@biometiss.com
www.biomedical-tissues.com